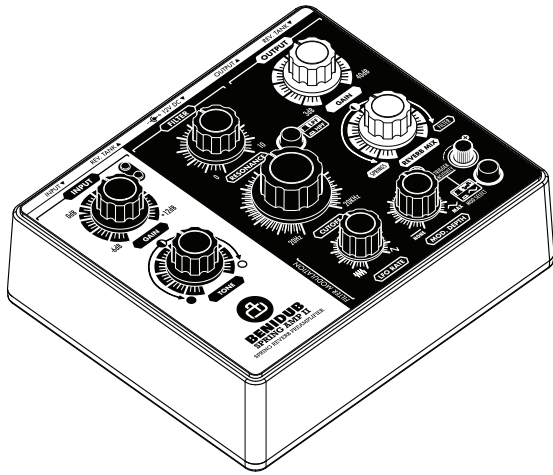


BENIDUB

SPRING AMP II

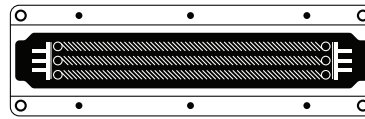
Spring Reverb Preamplifier



The **Spring Amp II** combines an HiFi amplifier for spring reverb tanks with a 2 poles VCF and relative modulation section. It works as an interface between standard audio mixers and spring reverb tanks made for guitar amps.

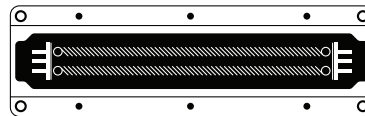
REVERB TANKS

The Spring Amp II works with an external spring tank. It is compatible with most of the tanks on the market (list below). Using external tanks makes them interchangeable giving a wide selection of reverb tones. There are three main types of reverb tanks, each of them has its own particular sound and tone and they are all available with short, medium or long decay.



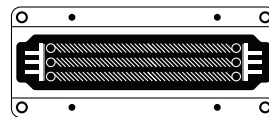
TYPE 9: 3 springs, long chassis.

COMMERCIAL CODE:	DECAY:
9AB1C1B	SHORT
9AB2C1B	MEDIUM
9AB3C1B	LONG



TYPE 4: 2 springs, long chassis.

COMMERCIAL CODE:	DECAY:
4AB1C1B	SHORT
4AB2C1B	MEDIUM
4AB3C1B	LONG



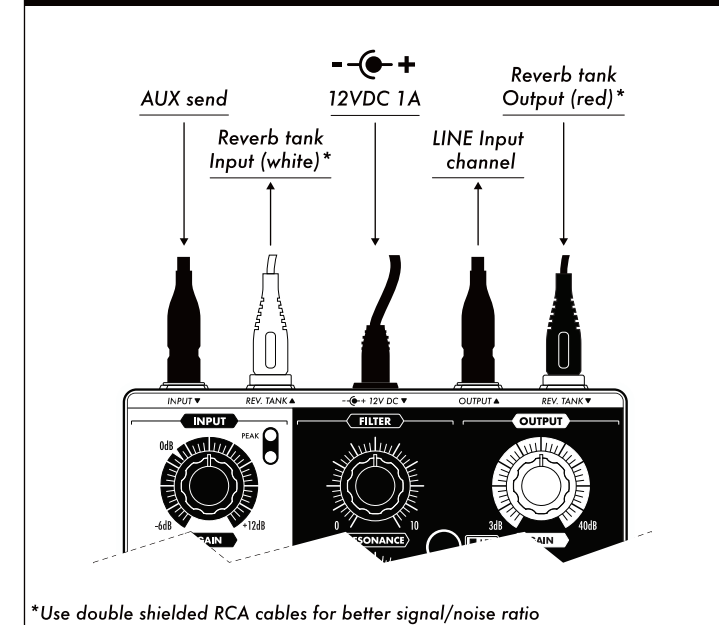
TYPE 8: 3 springs, short chassis.

COMMERCIAL CODE:	DECAY:
8AB1C1B	SHORT
8AB2C1B	MEDIUM
8AB3C1B	LONG

For a correct use of the Benidub Spring Amp II:

- 1 - This reverb must be used with a mixer or a dub preamp thru an AUX send + return channel. It can't be connected directly to a microphone, an electric guitar, a dub siren or any other instrument. In other words cannot be used in insert, as no direct sound passes thru it.
- 2 - Please, connect the reverb output to a mono LINE input of your mixer or preamp and the reverb input to an AUX send.
- 3 - Spring reverb tanks are sensitive to magnetic fields. To avoid hum it is important to place the reverb tank at least 50cm far from electronic devices especially the ones powered directly with main voltage, power adapters, PC displays and power outlets. The most noise sensitive part of a reverb tank is the output (red) RCA connector.
- 4 - The use of balanced 1/4" jacks for connections to and from the audio mixer will improve even more the signal to noise ratio of your spring reverb setup.
- 5 - Use only the provided (or equivalent) double shielded RCA cables, with metal connectors.
- 6 - Use just the provided power supply or a compatible one (see specifications).

SPRING AMP II - TYPICAL WIRING



User manual

Designed and manufactured by

BENIDUB
MUSIC EQUIPMENT

Calle San Antonio 1A
12192, Vilafames
Spain

Tel: +34 964 313 919
Sandro@benidub.com

Technical Specifications:

Power Supply: 12VDC, center positive, 2.1mm x5.5mm barrel type connector.

Current draw: less than 1A

Audio IN: 1/4" bal. or unbal. MONO Jack

Audio OUT: 1/4" bal. or unbal. MONO Jack

Size: 120x150x60 mm

Made in Spain



AUDIO INPUT:

1/4" bal. or unbal. MONO Jack.
Balanced connection improves sig./noise ratio.

TANK SEND:

Signal to the reverb tank.

POWER INPUT:

12VDC 1A, center positive, 2.1mm x 5.5mm barrel connector.

AUDIO OUTPUT:

1/4" bal. or unbal. MONO Jack.
Balanced connection improves sig./noise ratio.

INPUT GAIN:

Sets the input balanced amplifier gain, from -6dB to +12dB. 2x LED VU meter shows the input signal level.

FILTER RESONANCE:

Set the VCF peak amount around the cutoff frequency.

tone:

Reverb tanks always benefit from some trebles boost, the Tone control enhances the 8KHz region of the audio sent to the spring tank.

FILTER CUTOFF:

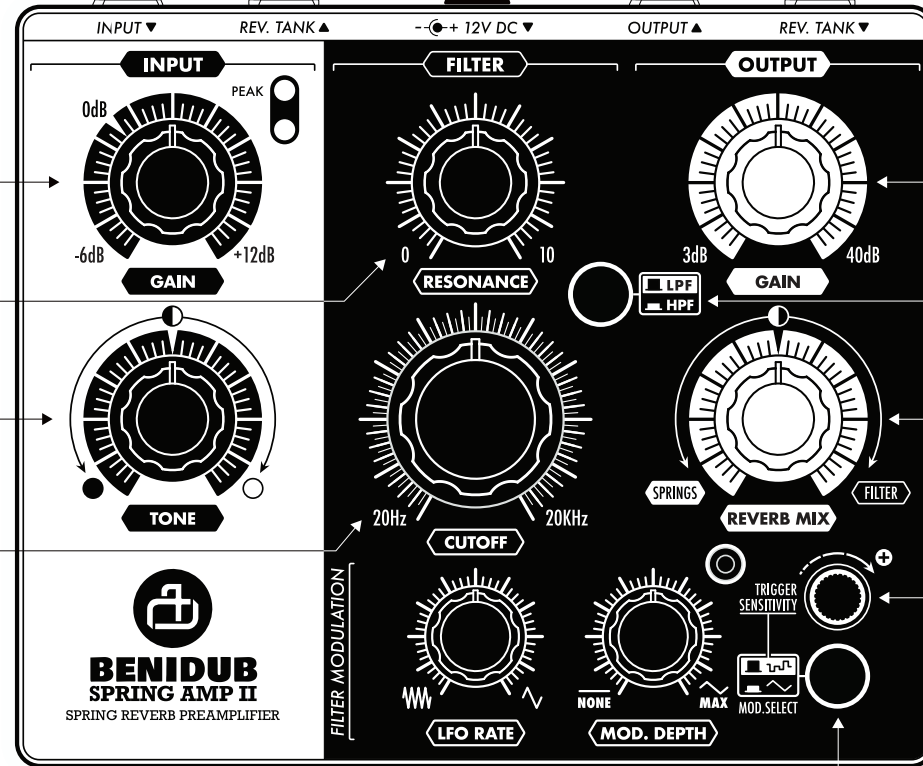
Main control of the VCF frequency.

LFO RATE:

Controls the modulation speed.

LFO DEPTH:

Sets the filter cutoff modulation amount.



TANK RETURN:

Signal from the reverb tank.

OUTPUT GAIN:

Controls the gain of the coil's pick up amplifier, even at full gain the unit won't clip when used with a compatible reverb tank.

LPF/HPF:

Selects the filter mode, Low Pass or, when the button is pressed, High Pass.

REVERB MIX:

A crossfader between filtered and un-filtered reverb sound.

TRIGGER SENSITIVITY:

Regulates the Sample and Hold's sensitivity.

MODULATION SELECT:

Modulation type, triangular LFO or Sample and Hold.

SAMPLE AND HOLD MODULATION:

If set on S&H modulation, the filter's cutoff freq. gets randomly changed when triggered by the input signal's peaks. The "trigger sensitivity" trimmer sets the trigger treshold.

